



STARTERS

EDAMAME 7

Tossed w/ Olive Oil and Sea Salt.

BAR BEER CHEESE 6

House-Made Beer Cheese w/ Italian Breadsticks or Toasted Baguettes.

HOMESTYLE MEATBALLS 10

Italian Tomato Sauce or Greek Style w/ Lemon and Tzatziki.

QUESADILLA 10

Sautéed Red Pepper, Onions, Jalapeño and 3-Cheese Blend.

+ CHICKEN 4 + BEEF 4

SANDS WINGS 12/18

Marinated and Fried Jumbo Chicken Wings w/ your Choice of Special Dry Rub, Chipotle BBQ, Sands' Buffalo, Honey Sriracha Served w/ Bleu Cheese or Ranch.

SANDS FRITES 5/8

Truffle Oil, Asiago, Parsley and Sea Salt.

NACHOS 12

House Chips, 3-Cheese Blend, Jalapeños, Sweet Peppers and Fresh Queso.

+ CHICKEN 4 + BEEF 4

CHICKEN TENDERS 10

Crunch Pepper Flake Breading w/ Honey Mustard or BBQ.

POT STICKERS (GYOZA) 9

w/ Soy Ginger Sauce.

SHRIMP COCKTAIL 13

6 Jumbo Shrimp in Zesty Cocktail Sauce.

***CHIMICHURRI CEVICHE 13**

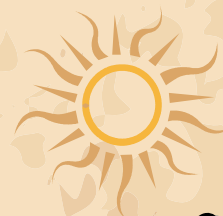
Marinated Shrimp - A Classic w/ A Twist and House Chips.

FIRECRACKER SHRIMP 13

Tender Crispy Shrimp Tossed in a Sweet n' Spicy Chili Sauce.

BRUSCHETTA ON MIAMI 13

A Destructed Pairing of Blistered Tomatoes, Soft Mozzarella, Basil, Balsamic and Toasted Baguettes.



Sands

on Miami

SALADS

GRILLED WEDGE 12

Grilled Romaine, Tomato, Pickled Red Onion, Bleu Cheese Crumbles and Bacon. Dressed w/ Balsamic.

BEEF AND BLEU 13

Mixed Greens, Roasted Beets, Feta, Pickled Onions, Pine Nuts and House-Made Bleu Cheese Dressing.

CHEF 13

Mixed Greens, Ham, Turkey, Pepperoni, Provolone, Croutons and Cherry Tomatoes w/ House Ranch.

SANDS SEASONAL 13

Mixed Greens, Seasonal Fruits, Red Onion, Candied Walnuts and Feta Cheese. Served w/ House Vinaigrette.

SANDS GREEK 12

Cucumber, Red Onion, Kalamata Olive, Feta and House Greek Dressing. Served on a Bed of Mixed Greens.

+ Char-grilled Chicken w/ any Salad. 4

HOUSE-STYLE SOUP/CHILI 6

Prepared Daily w/ Toasted Baguette. Ask server for selections.



Sands

on Miami

239 Miami Ave W
Venice, Florida 34285
941.837.2176

SANDWICHES

Served w/ Frites or House Slaw.



GARDEN WRAP 12
Mixed Chopped Vegetables,
Tossed In Lemon Oil Wrapped
in a Spinach Tortilla with House
Greek Sauce and Feta Cheese.

ADD CHICKEN OR TURKEY 3

DELI WRAP 14
Ham, Turkey, Pepperoni,
Red Onion, Provolone and
Lettuce, with Balsamic Dressing.

TENDER WRAP 13
Crispy Chicken, Lettuce, Tomato,
Onion and 3-Cheese Blend w/
House Ranch.

ITALIAN MEATBALL 13
Homestyle Meatballs
Smothered in an Italian
Tomato Sauce with Melted
Provolone and Fresh Romano.

CLASSIC CLUB 13
Turkey, Ham, Bacon, Monterey
Jack, Lettuce, Tomato and
Chipotle Mayo.

AVOCADO B.L.T. 13
Bacon, Lettuce, Tomato and
Fresh Avocado w/ Garlic Mayo.

SPECIALTIES

*Served A-la-carte.

* **BOLOGNESE 20**
Pappardelle Tossed with House-Made Meat Sauce.

* **GRILLED SALMON 24**
Chilean Salmon Filet w/ Lemon Beurre Blanc.

THE CLASSIC 18
Shrimp and Scallion Patty, Topped with Red Cabbage,
Sprouts, Tomato, Guacamole and Sautéed Chili Sauce.
Served with Frites, House Slaw or Green Beans.

THE GROUPER 21
Seared Grouper, Lettuce and Tomato, with a Lemon
Basil Butter on a Chibatta Bun w/ a Side of Tartar.
Served with Frites, House Slaw or Green Beans.


Sands
on Miami

239 Miami Ave W
Venice, Florida 34285
941.837.2176

*Consuming raw or undercooked meats, poultry, seafood, shellfish or eggs may increase your risk of food borne illness. Please let us know if you have food allergies, sensitivities, or any special dietary needs.

SIDES



CHIPS & SALSA 6

HOUSE SLAW 4

GREEN BEANS 5

ONION RINGS 6

SIDE SALAD/CAESAR 6

GRILLED BAGUETTE 1/2/3



BURGERS

Served w/ Frites or House Slaw.

Make it a Double +4

SANDS 13
Monterey Jack Cheese,
Lettuce, Sautéed Red Onion,
Tomato, Bacon and Garlic Mayo.

OLIVE 12
Olive Sauce, Lettuce and Provolone.

BBQ BACON 13
Cheddar, Bacon, Fried Onion Ring and House BBQ.

CALIFORNIA 13
Black Bean Patty, Avocado Mayo w/ Lettuce,
Tomato, Feta Cheese and Pickled Red Onion.

DESSERTS

CARROT CAKE 9
Three Big Layers with Butter Cream
Cheese Icing and Chopped Walnuts.

CHOCOLATE FUDGE CAKE 9
Fudge Cake with Rich Chocolate Icing
and Chocolate Crunch Sides.